

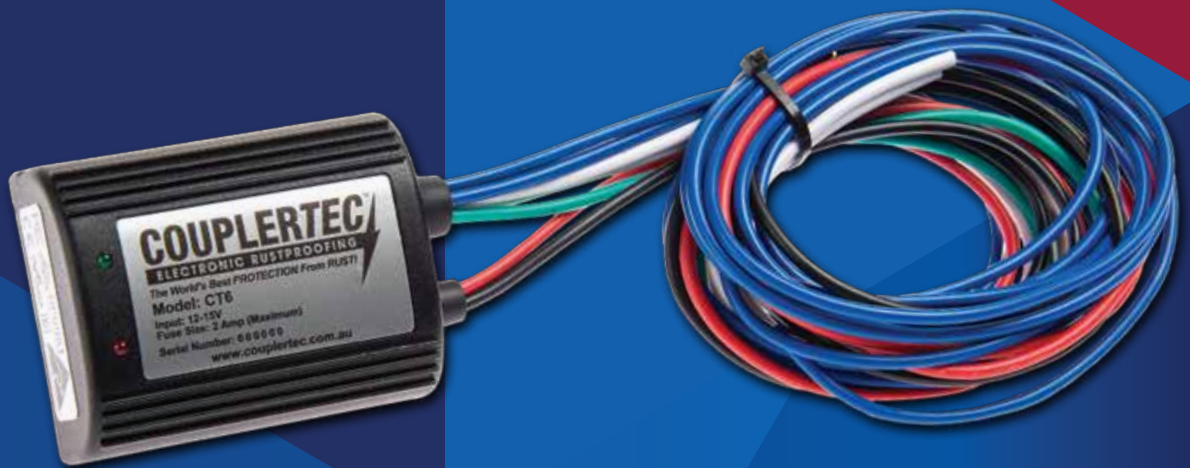
COUPLERTEC™

ELECTRONIC RUSTPROOFING

The World's Best **PROTECTION** From **RUST!**



FAULT FINDING GUIDE



MODELS: CT2, CT4 & CT6

HOW TO USE THIS GUIDE

Refer to the table below to identify the description of the fault. Proceed to the corresponding page for instructions on identifying the possible cause of the fault and how to resolve it.

For technical and warranty support please contact one of our Couplertec Technical Service Representatives during the following times: Monday – Friday 8.30am – 4.30pm EST. Australia

Calling From Within Australia: 1800 66 78 78 | International Calls: +61 7 5522 0200

DESCRIPTION OF FAULT	PAGE
Red LED Flashing Continuously	2
Red & Green LED's Flashing 10 Times Every 50 Seconds	3
No Green LED	3
Module Blowing Fuses	3
OTHER INFORMATION	
Fault Finding Flow Chart for Dead Short	4
Testing Procedure for Module Output	5
Modules Modes of Operation	5

Red LED Flashing Continuously

Fault Type:

Dead Short

Possible Causes:

- **A damaged Capacitive Coupler Wire (Blue/White wire) coming into direct contact with a metal surface.**
- **Damaged Capacitive Coupler coming into direct contact with a metal surface.**
HINT: Mainly caused during installation when a Capacitive Coupler has been fitted to a rough surface (eg. welding slag) which has punctured the Capacitive Coupler.
- **Water coming into contact with an unsealed Coupler Wire connection (Blue/ White Wire) .** *HINT: This fault will ONLY show after the vehicle has been in contact with water e.g Washing the vehicle or driving through water.*
- **Dead short within the Module**

Follow the Fault Finding Flow Chart on page 4 to diagnose the cause of the DEAD SHORT.

Red & Green LED's flashing 10 times every 50 seconds

Fault Type: Low Battery

Cause: Low Battery

Carry out the following checks to diagnose the cause of the fault:

1. Ensure that the CouplerTec System is connected to the main start battery. If possible, start the vehicle and reset the CouplerTec System (pull the fuse out, wait 20 seconds and then re-insert the fuse).
2. Check the battery output with a multimeter. CouplerTec Systems require a minimum input of 11.3V to operate. Recharge or replace the battery if necessary.

No Green LED

- Possible Causes:**
- Blown Fuse
 - Disconnected Power Supply
 - Dead Battery
 - Bad Earth
 - Failed LED

Carry out the following checks to diagnose the cause of the fault:

1. Check the fuse and replace if necessary (Maximum: 2Amp Fuse). Check the connections to the
2. Battery, clean and tighten if necessary.
3. Check the battery output. CouplerTec Systems require a minimum input of 11.3V to operate.
4. Check that the Green Wire is grounded to the body of the vehicle.

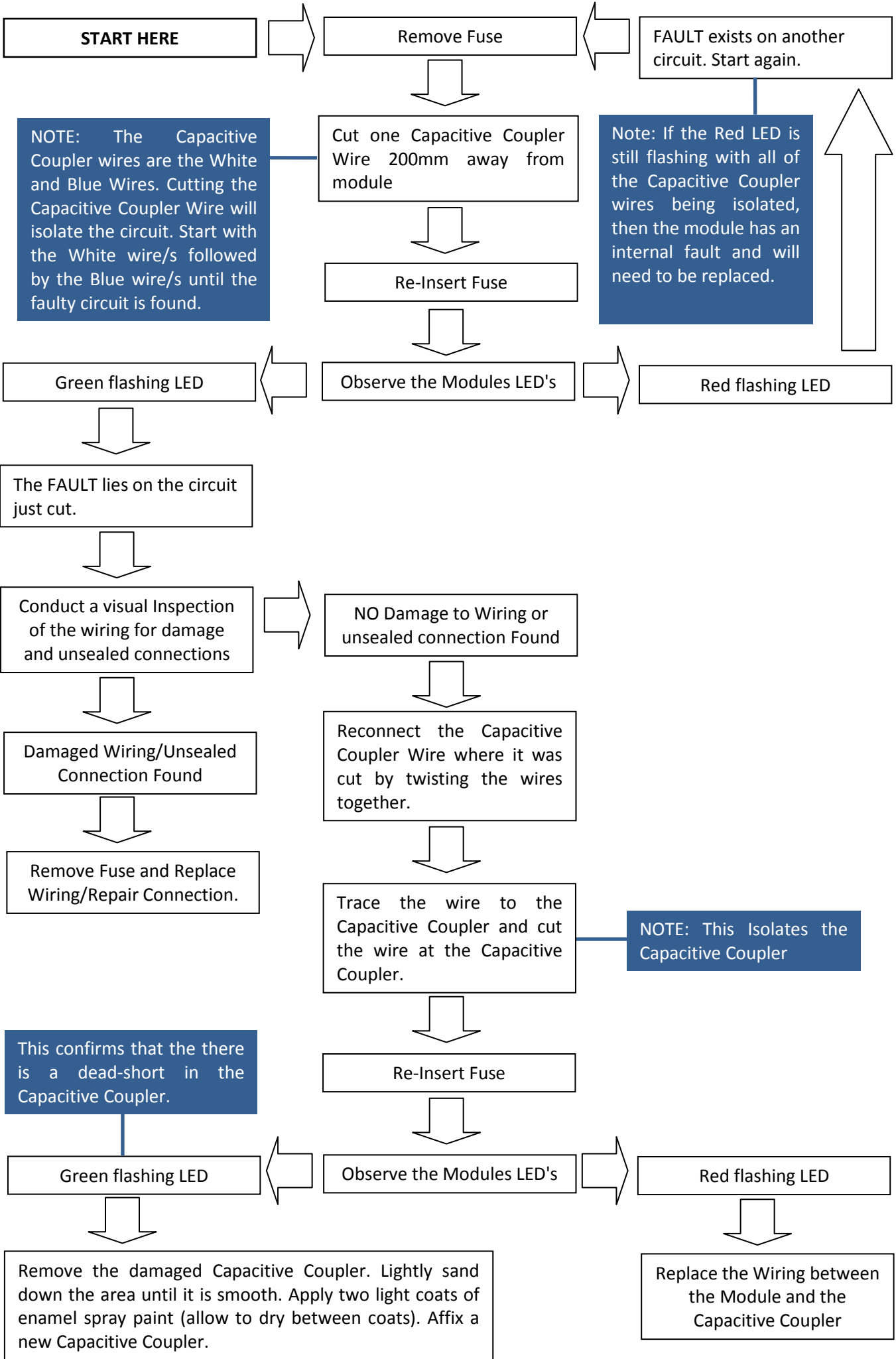
If the fault is still present after completing the above checks, conduct the test procedure for module output. If the module has output, this confirms that the system is still working but the GreenLED has failed.

Module Blowing Fuses

- Possible Causes:**
- Dead Short in Capacitive Coupler Wiring
 - Dead Short in Capacitive Coupler
 - Dead Short within the module

Follow the Fault Finding Flow Chart on page 4 to diagnose the cause of the DEAD SHORT.

Fault Finding Flow Chart for DEAD SHORT



TESTING PROCEDURE FOR MODULE OUTPUT

When conducting this test, do not hold the probe to earth any longer than 5 seconds at any one time.

Step 1: Set Multimeter to 500 DCV or higher

Step 2: Insert the Multi-meters RED probe into the Modules Blue Capacitive Coupler Wire.

Step 3: Place the Multi-meters BLACK probe to body ground (earth) on vehicle.

Step 4: Read the Voltage on the meter.

NOTE: The output will read between 200 -300 DCV depending on the meter quality and vehicle battery voltage.

MODES OF OPERATION

The CouplerTec Electronic Rustproofing Module has two LEDs (Red & Green) which indicate the systems current mode of operation. **The Module has three modes of operation, which are:**

1.Start-up Mode

When the fuse is inserted the modules Green LED will illuminate for 30 seconds whilst the system configures itself.

2.Normal Operation Mode

The modules Green LED will flash continuously confirming that the system is functioning correctly.

3.Fault Mode

The modules Red LED will flash upon the detection of a fault. The fault indicators are:

- **Red LED flashing continuously:** This indicates that the module has detected a **Dead Short** and has shut itself down.
- **Red & Green LEDs flashing together 10 times every 50 seconds:** This indicates **Low Battery**, meaning that the vehicles battery level has dropped below the minimum input requirement and that the module has shut itself down to protect the battery.